



MARATHON

MaxiLog-LN2™

Our Single-use Data Logger with Real-Time LCD Display and Built-in Probe for Cryogenic Temperature Monitoring.

MaxiLog-LN2 is the revolutionary, single-use, pre-programmed, electronic temperature data recorder specifically designed for measuring temperatures during the transportation or storage of all your cryogenic stem cells and biologic materials.

The thumb-sized MaxiLog-LN2 fits easily into small spaces. The real-time LCD screen provides instant TOA (Time Over Alarm) notification. The MaxiLog-LN2 is NIST-traceable and available with Certificates of Temperature Conformance.

Functions include:

- Accurate RTD sensor probe: records time and temperatures for user selectable readings in Celsius or Fahrenheit.
- LCD display: Shows High and Low Alarm Limits, Current Temperature, Run Time and TOA (Time Over Alarm) in Days, Hours and Minutes.

The internal firmware records the following: time mechanism, start time, sampling intervals, end description for special instructions, alarm values, recording status, measurement data, software version, serial and tracking number, model type, and after-the-fact report generation options.

Visual Alarms: All our data loggers can be programmed with alarm limits. Should the temperature reach levels outside these limits, the LDC will display an alarm icon. To start the recorder, simply press the start button!

USB Interface: To download recorded information, simply plug the USB Cradle into the standard USB port of your PC.

Temperature Range

- -200°C to +40°C /
-328°F to +104°F

Temperature Accuracy

- $\pm 0.5^{\circ}\text{C}$ ($\pm 1.0^{\circ}\text{F}$)
from 0° to 10° C
(30° to 50° F);
 $\pm 1.0^{\circ}\text{C}$ ($\pm 1.8^{\circ}\text{F}$)
at extremes

Measurement Intervals

5 seconds to months

Number of Measurements

8K memory

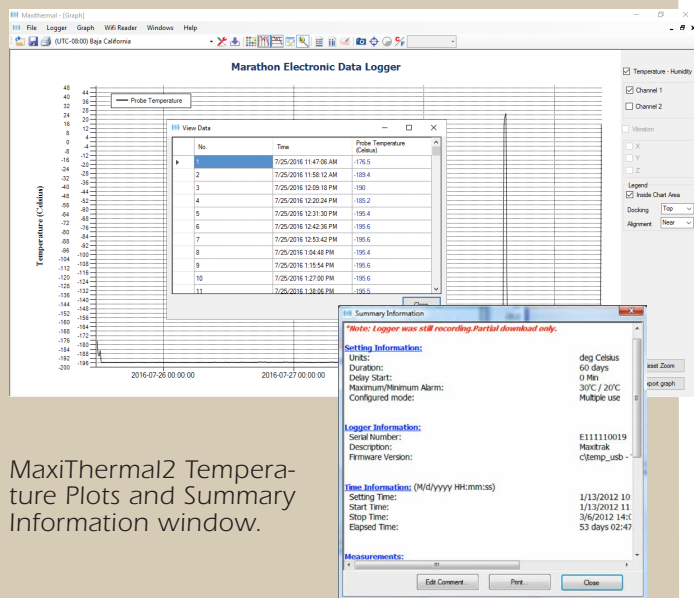
MARATHON



PRODUCTS, INC.

Don't ship without us!®

MaxiThermal2 Software Highlights: Easy-to-use software provides clear graphs. Report Summary & Statistics File Manager, Note Attachment, Zoom, Elapsed Time or Date/Time View, Recorded View, Celsius or Fahrenheit. Data can be exported to other Windows programs such as spreadsheets, word-processing or databases. Available for Windows 7 & 8.1 and 10. An Enterprise Software version and 21CFR Part 11 Compliant Software are available.



MaxiThermal2 Temperature Plots and Summary Information window.

MaxiLog-LN2 Specifications SKU #7041

Memory:	EEPROM, 8k Storage (approx. 8,000 data points)
Temperature Range:	-200°C to +40°C (-328°F to +104°F)
Temperature Sensor:	PT-1000 probe
Temperature Accuracy:	±0.5°C at 0° to 10°C, ±2.0°C at extremes (±0.9°F at 32° to 50° F, ±3.6°F at extremes)
Temperature Resolution:	0.1°C
Measurement Intervals:	Pre-programmed from 5 seconds to months depending on model type (duration).
High and low alarm limits:	Alarm icon displayed on LCD screen.
Computer Interface:	USB Cradle
Internal Firmware Provides:	Internal Clock, Start time, Interval, User description, Alarm values, Recording status, Measurement data, Firmware version, Serial number, Model type.
Power Source:	CR2032 battery
Size:	Length 5.0 cm (1.97 in.) Width 2.7 cm (1.06 in.) Depth .8 cm (0.31 in.)
Weight:	30 g (1.05 oz.)
Probe	Length: 12.7 cm (5.0") Cable & Probe Length: 50.8 cm (20.0")
Warranty:	6 months
CE Certified:	Yes
Required Accessories:	MaxiThermal2 Software, USB Cradle
Optional Accessories:	Mounting Bracket



Mounting Bracket



USB cradle

Please call 1-510-562-6450
for more information or to place an order.

www.marathonproducts.com

627 McCormick St., San Leandro, CA 94577 ■ jnakagawa@marathonproducts.com