



# AgraStrip® Pro Allergen

This quick guide is valid only for the kits listed below.

## Technical Specifications

Part No.	Product	Cut-off	
		Foodstuffs and rinse water [ppm]	Swabs [µg]*
ALR-0030P	Almond	2	2
ALR-0025P	beta-Lactoglobulin	0.5	0.5
ALR-0045P	Brazil nut	5	5
ALR-0023P	Casein	1	1
ALR-0042P	Cashew/Pistachio	2	2
ALR-0060P	Coconut	10	10
ALR-0027P	Crustacea	10	10
ALR-0029P	Hazelnut	5	5
ALR-0043P	Lupin	10	10
ALR-0044P	Macadamia	2	2
ALR-0036P	Milk	1	1
ALR-0035P	Mustard	2	2
ALR-0028P	Peanut	1	1
ALR-0046P	Sesame	5	5
ALR-0031P	Soy	2	2
ALR-0041P	Walnut	5	5
ALR-0032P	Whole egg	2	2

\*Swabbing area is 25 cm<sup>2</sup>. Cut-off was calculated.

**Assay time including extraction:** 11 minutes

**STORAGE:** The kits must be stored at RT (15 – 25 °C (59 – 77 °F)). Do not freeze. Do not open until needed. Store the test strips only in their original packaging. Do not use beyond the expiration date indicated on the package.

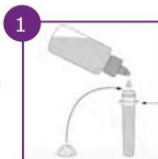
**IMPORTANT:** Please read the product manual before performing the assay.



1295 Morningside Avenue, Unit 16-18  
Scarborough, ON M1B 4Z4 Canada  
Phone: 416-261-4865 Fax: 416-261-7879  
www.scigene.com

## Sample extraction

Liquid/Solid samples

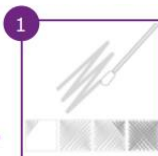


Add **0.2 mL** liquid sample (or rinse water), or weigh in **0.2 g** of homogenized sample into the extraction tube. Fill with **extraction buffer** to the level shown



Close the tube with the cap and vigorously shake by hand for **1 minute**. You can squeeze the tube to help suspend the sample. Proceed to step 3 (on the other side of this page).

Swab samples



Fill one extraction tube with **extraction buffer** up to the neck of the tube (see step 1 for solid/liquid samples). Wet a swab by dipping it into the buffer. Wipe an area of **5 x 5 cm** using side-to-side movements, rotating the swab tip as you go.



Place the swab into the extraction tube. Carefully break off the end at the pre-scored point. Close the tube with a cap and shake vigorously for **1 minute**. Proceed to step 3 (on the other side of this page).



# AgraStrip® Pro Allergen

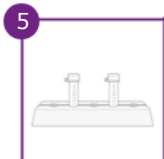
## Sample testing



Remove the smaller cap to open the dropper tip and transfer **6 drops (200 µL)** into an incubation vial. Close the lid of the vial.



Shake the incubation vial vigorously by hand for **15 seconds**. Make sure that the liquid comes into contact with the lid of the vial.



Tap the base of the vial onto a surface to ensure that no liquid is remaining in the lid. Let it incubate on the rack at room temperature for **5 minutes**.



Take one test strip from its container and place it vertically (arrows pointing downwards) into the incubation vial. Incubate for **5 minutes**. **Read the result immediately.**

## Result interpretation



**Neg Pos**

It is important to read the results **immediately after the 5-minute incubation step**. Longer incubation times can lead to false-positive results. The AgraStrip® Pro Allergen LFD kits have been extensively validated to show reliable results at exactly 5 minutes.

### Negative results

**Only the control band (C) appears in the results area** of the test strip.

### Positive results

**The control band (C) and the test band (T) appear in the results area of the test strip.** The sample could contain the target allergen in a concentration higher than the cut-off value and further investigations should be performed (e.g. quantification of the allergen using AgraQuant® Allergen ELISA kits).

### Invalid results

No control band (C) appears, regardless of whether the test band (T) appears. Repeat the procedure with a new strip. If the problem persists, please contact Romer Labs before continuing.

You can find worldwide contact information and learn more about our complete line of products for allergen testing on our website.